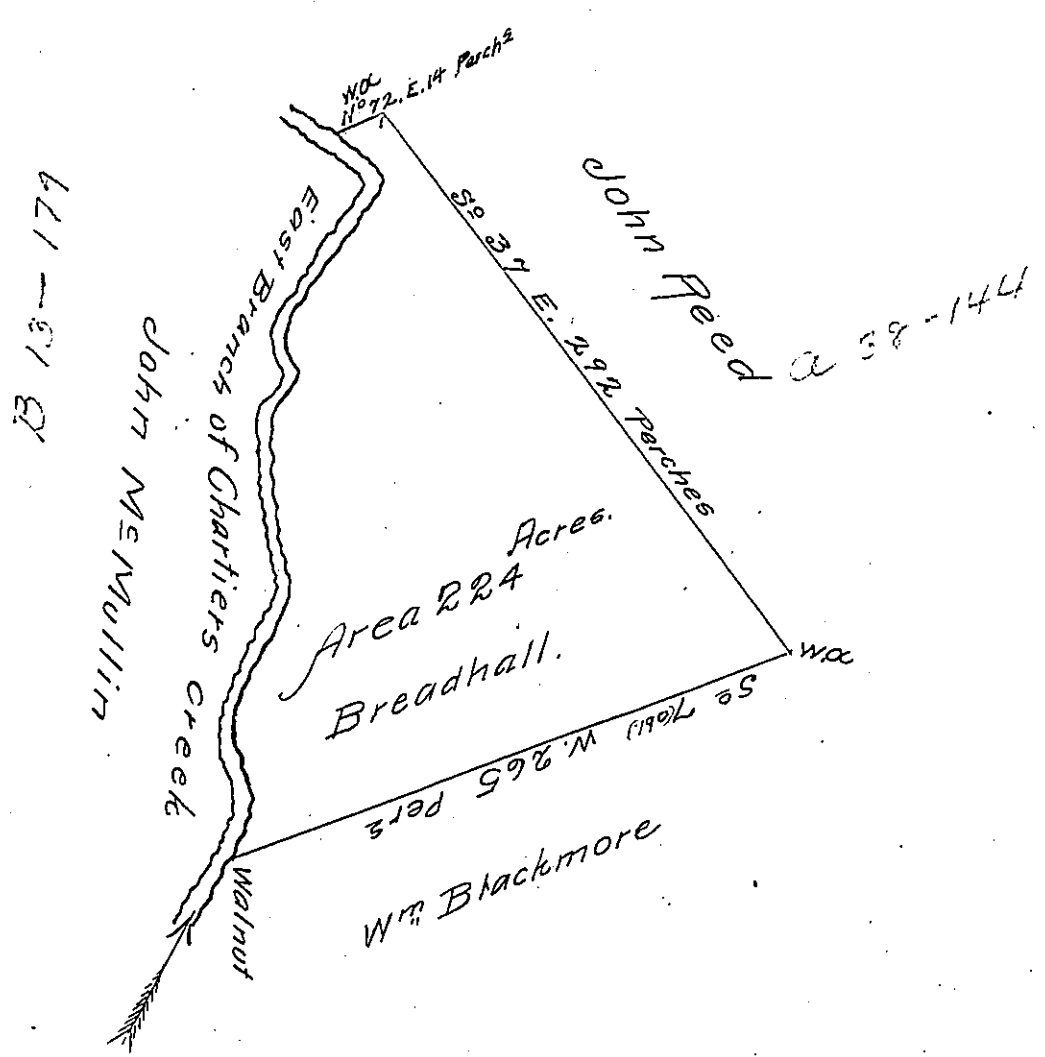


Courses along the Creek

N <sup>o</sup> 37	E	25	Perches
N <sup>o</sup> 19	W	38	D <sup>o</sup>
N <sup>o</sup> 29	E	60	D <sup>o</sup>
North		81	D <sup>o</sup>
N <sup>o</sup> 38	E	16	D <sup>o</sup>
N <sup>o</sup> 25	W	13	D <sup>o</sup>
N <sup>o</sup> 28	E	27	D <sup>o</sup>
N <sup>o</sup> 38	E	61	D <sup>o</sup>
N <sup>o</sup> 45	W	28	D <sup>o</sup>
			<u>349</u>



The above is a draught of a Tract of Land lying on the waters of Chartiers Creek Washington County called Breadhall containing 224 Acres with the usual allowance.

Surveyed in pursuance of a Warrant from Philadelphia dated 25<sup>th</sup> february 1785 for John Shannon May 25<sup>th</sup> 1785

Presley Nevill } D.S.  
Matt<sup>o</sup> Fitchie }

John Lukens Esq<sup>r</sup>  
Surv<sup>r</sup> Gen<sup>l</sup>

IN TESTIMONY that the above is a copy of the original remaining on file in the Department of Internal Affairs of Pennsylvania, made conformably to an Act of Assembly approved the 16th day of February, 1833, I have hereunto set my Hand and caused the Seal of said Department to be affixed at Harrisburg, this thirtieth day of November 1906

*Isaac R. Brown*  
Secretary of Internal Affairs.